



PeopleScout Limited

Company Presentation

CONNECT
MORE.

 peoplescout™
A TRUEBLUE COMPANY

PeopleScout Overview

Delivering RPO solutions
with creativity at its core,
and all designed with one
outcome in mind: your
competitive advantage

Driving Industry-Leading
Results, Proven Through
Industry Recognition

- RPO and Talent Advisory Solutions
- Ranked as a Leader By Industry Analysts
- Achieving 97% Client Retention
- Expanding 95% of First Year Engagements



SUPPORTING OVER
300,000 ANNUAL
HIRES FOR THE
WORLD'S LEADING
BRANDS

BROAD EXPERIENCE ACROSS MOST
INDUSTRIES, VERTICALS
& JOB TYPES



Creative RPO



Industry-first thinking: We do what it takes to help organisations connect with the best candidates – blending clever, industry-first thinking with in-house subject matter expertise.



At the forefront of AI: Powered by Affinix, our cloud-based proprietary tech platform, we're at the forefront of HR tech, AI and machine learning. From occupational psychologists and recruitment strategists to brand, digital and social experts – our solutions start smart and keep getting smarter.



A creative mindset: PeopleScout's unparalleled blend of insight, expertise, tenacity and technology will help you win – turning candidates into advocates and finding the right hires first time, every time. And it all starts with creative minds.



Obsessed with delivery: Intelligence drives everything, and our approach is bespoke. We start with your challenges, not our processes. Crucially, everything we do is scalable, agile and above all, built to deliver. We keep our promises.

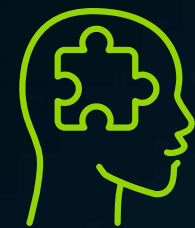
**CONNECT
MORE.**

 **peoplescout**[™]
A TRUEBLUE COMPANY

Creative RPO



The scale you need: Agility is baked in. We can scale up to handle the full-cycle, global recruitment of thousands of annual hires. We are equally adept at recruiting rare and hard-to-find specialists in niche professions.



Powerful insights: We're determined to add value in every sense. We're proud to be thought leaders – dedicated to arming you with the thought-provoking, far-reaching insights you need to stay ahead of the competition. We'll help you capitalise on the latest market analysis, AI tools, industry-first thinking and competitive intelligence to optimise your people strategy.



We help you win: Ultimately, PeopleScout's unparalleled blend of insight, expertise, tenacity and technology will help you win – turning candidates into advocates and finding the right hires first time, every time.

CONNECT
MORE.™

 peoplescout™
A TRUEBLUE COMPANY

Resource-On-Demand



Save time: Our Resource-On Demand model can help you speed up your time-to-fill by handling all of part of the recruitment process. Typically, the implementation takes between two to four weeks.



Save money: Our solution rivals the capabilities and costs of traditional staffing agencies, but rather than a pay-per-hire model, it's based on an hourly model, making it a cost-effective way to meet your talent needs.



Reach Hard-to-Find Talent: Our Resource-on-Demand model is a great way to augment your in-house team by taking over the recruitment process for hard-to-fill roles due to skills shortages. Whether you need specialised IT, healthcare or manufacturing talent, our recruiters are assigned based on industry experience, not cost and availability.

**CONNECT
MORE.**

 **peoplescout**[™]
A TRUEBLUE COMPANY



Resource-On-Demand



Gain Agility: Our Resource-on-Demand model leverages our scalable recruitment teams and global delivery centres to help manage fluctuations in hiring volumes, particularly for seasonal peaks, without the need for additional internal resources. Plus, we can seamlessly disengage once you fulfil your business objectives.



Fill the Top of your Funnel: Our ROD recruiters can work to fill the top of your recruitment funnel with more candidates. This gives your internal teams back time to review applications, interview candidates and make hiring decisions.

**CONNECT
MORE.™**

 **peoplescout™**
A TRUEBLUE COMPANY



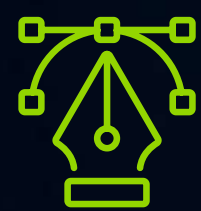
Talent Advisory

With one of the largest in-house talent advisory teams in the industry, PeopleScout is a talent strategy powerhouse.



Insights:

- Persona Development
- Audience Segmentation
- Labour Market Trends
- Market Mapping
- Exit Insights



Brand:

- EVP Development
- Brand Messaging Frameworks
- Brand Identity Development
- Brand Rollout Programmes
- Brand Benchmarking



Attraction:

- Social Media Strategy and Execution
- Content creation and communication
- Careers Website and Microsites
- Channel Planning and Execution
- Film



Consulting:

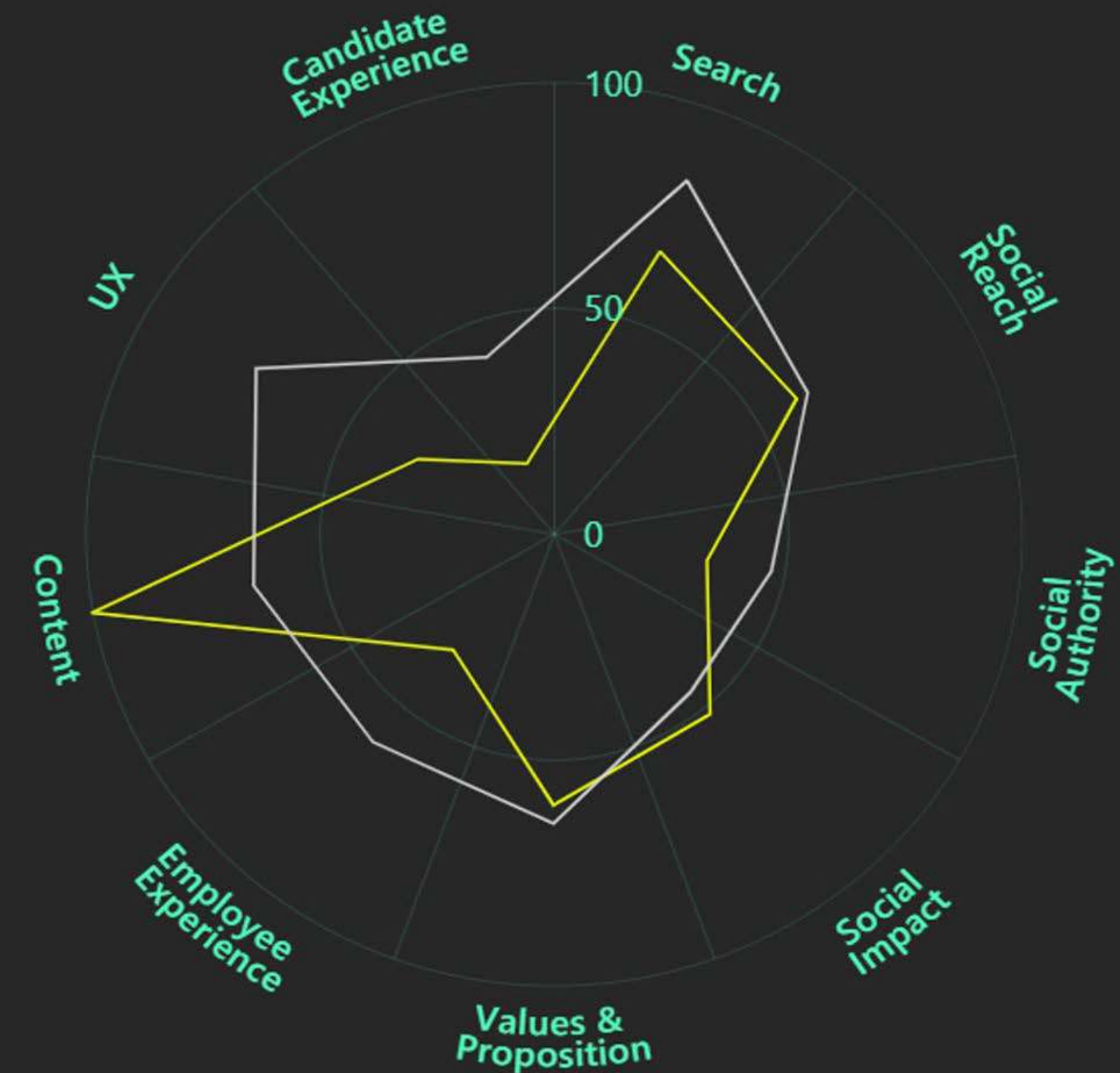
- Recruitment Process Consulting
- Diversity and Inclusion
- Digital Consulting – Innovation

Employer Branding Index

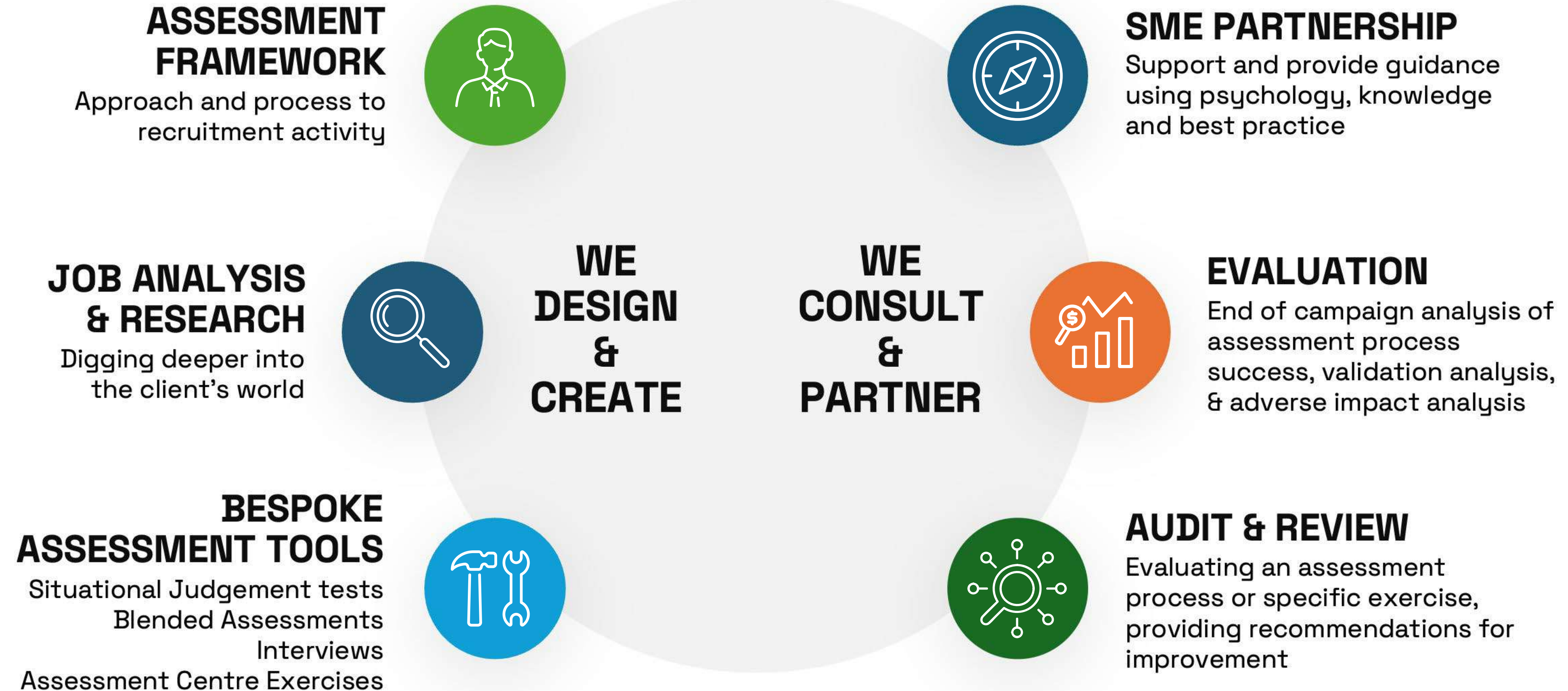
Our Employer Branding index is our unique industry benchmarking tool to assess the power of your employer brand against your key competitors.

The Index will assess the power of Jungheinrich's employer brand against nine key data points; Social Authority; Social Reach; Social Impact; Values & Proposition; Employee Experience; Content; UX, Search and Candidate Experience. This powerful tool will objectively spotlight the strengths and weaknesses in Google's employer brand performance, allowing us to create a solution built on data and insight.

We've added Excelya to the index below:



Assessment Design



Analytics Capability

We provide a single source of truth for talent acquisition leaders to understand the end-to-end recruitment process and gain visibility into the total talent landscape.

MONITOR TRENDS IN:

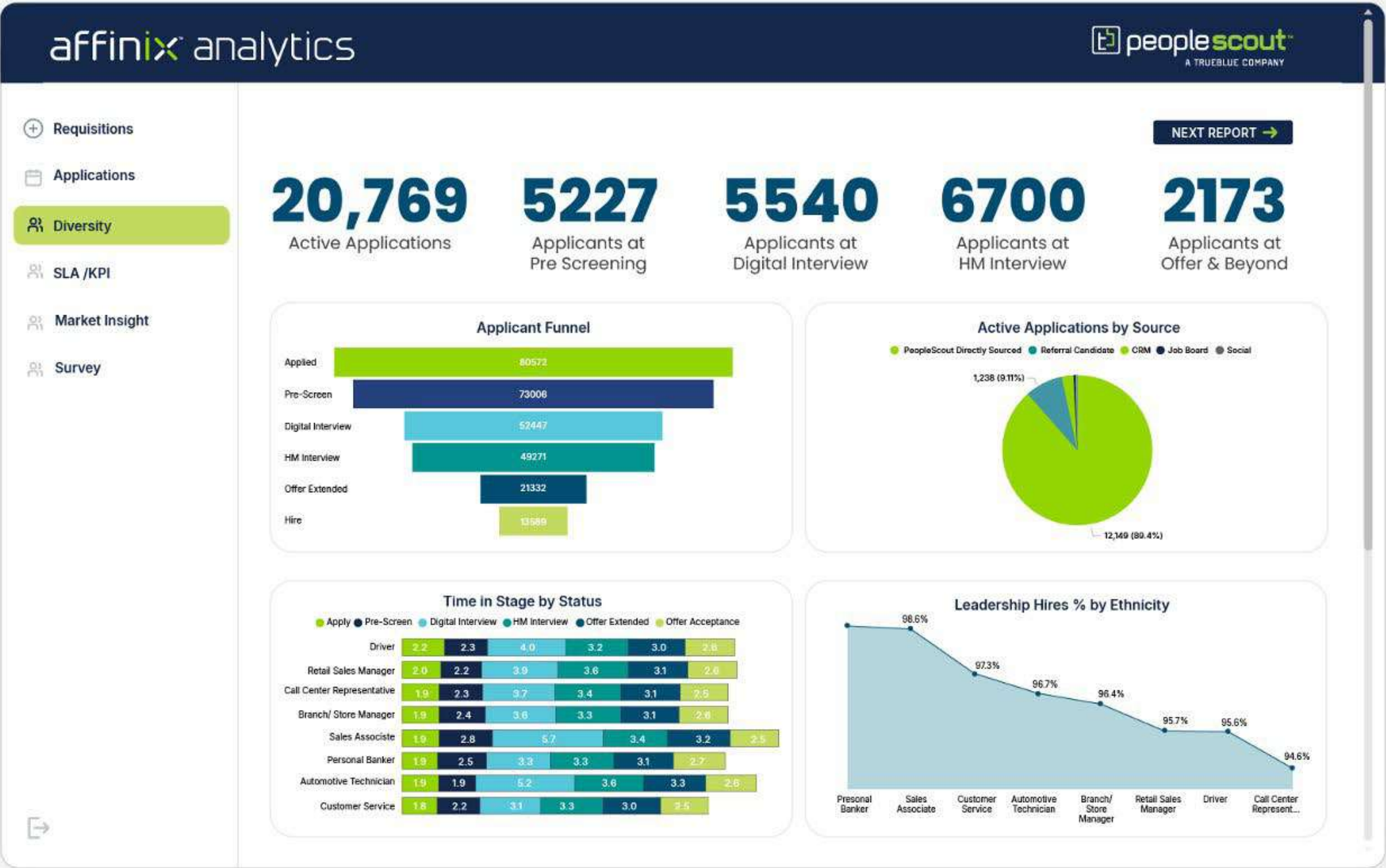
- ✓ Career site performance
- ✓ Pipeline health
- ✓ Funnel conversion
- ✓ SLA scorecard
- ✓ Number of requisitions
- ✓ Average days open
- ✓ Slate submittals
- ✓ Time in process
- ✓ Offer accept percentage
- ✓ Number of hires
- ✓ Fill rate
- ✓ Media/campaign source
- ✓ Diversity
- ✓ Retention
- ✓ Satisfaction survey results

Interactive
dashboards

Pre-built
reports

AI-boosted
reporting

Secure
integrations



ATS/VMS
Integration

Candidate &
hiring manager
surveys

Predictive
modeling

Advanced
Security

Market Research Capability

As part of our Creative RPO solution, we conduct extensive research of the hiring landscape for in-scope roles and locations. We leverage data from Horsefly, TalentNeuron, Indeed Insights and LinkedIn to understand candidate and skillset availability in specific geographies, recruitment difficulty level, target companies to recruit from and potential sourcing costs.



- Candidate supply
- Candidate identification
- Compensation benchmarking
- Competitor research
- Global data capabilities
- Diversity & ethnicity data

TalentNeuron

- Candidate supply
- Candidate demand
- Candidate competition
- Competitor labour market activity



Thank you